



# C.M.G.C. Newsletter

Vol 9. February 2021 Editor/Designer: Fiona Lynch

Dear Members,

We lived in hope that 2021 would bring us together again, but sadly this is not to be. As explained in the accompanying email, unless members stand up to form a new committee to regenerate the club, the CMGC will fold as a club.

This will be the last newsletter, as I move to WA next month, and don't know anyone who can take over this job. By producing this publication during Covid, I have tried to keep our club alive and our members connected, but none of us anticipated the time it would take for this pandemic to be brought under control and for safe conditions to resume again.

During my short time in the club I have made wonderful friends, visited places I never knew existed and rediscovered and used many professional skills developed in the past.

We wish you all the very best for the future, happy gardening and the hope that the club will resume and survive with a new committee in the future.



Warmest regards, **Your departing CMGC Committee and President.**

**Below** - Beautiful dahlias and petunias growing in the garden of club member Jan Case.



## Summer veggies and blooms in member's gardens:



Photographic Contributors - Jan Case, Yvonne McBean, Terry Poskitt and Fiona Lynch.



# Living on acreage -

- by Jill Thorpe

Five years ago my husband and I moved to a five acre property in Park Orchards. This property was next door to our youngest son and his wife and their five children. They are also on five acres. We had lived for 48 years in Viewbank on a suburban block. Unlike most of our friends, we have **upsized** instead of downsizing.

The property had an older style house and a garden. that was neat but unloved and hungry. The previous owner had not lived at the address for nine years, hence there was a little work to be done to make it special to us.

There is always something to do in the garden, so we are constantly busy. Five years later, we now have ornamental gardens around the house which act as a fire barrier to the bushland surrounding us. Roses, violets, lilies, orchids, and numerous bulbs and other plants have been added. The mature trees are refreshed and healthy once again.

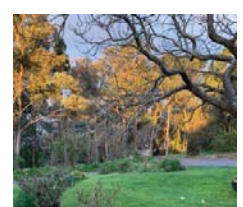
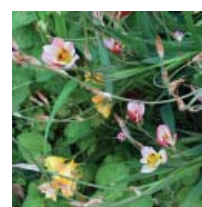
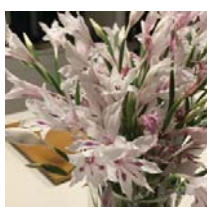
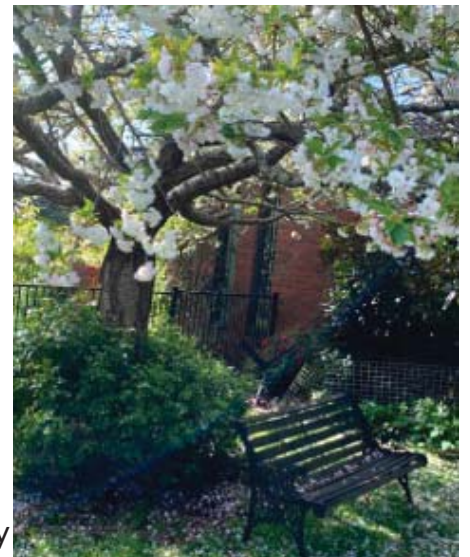
The orchard now has 28 trees and most are producing well. The passionfruit vines delivered more than 250 fruit last February through to May. We have also put in a Berry stand. This is so decorative and useful and has been an amazing addition to the productivity of our garden. Robert, my husband, has six raised garden beds for our vegetables.

The vegetables we have grown have kept me away from the green grocer for most of the year.

We live in beautiful natural bush. with an amazing array of native flowers that hug the boundaries of our property.

Many of our neighbours have large properties of 30 acres, each with a lot of natural bush. Kangaroos and deer regularly pass through. Recently I was visited by a pack of fox cubs, playing and frolicking close to the house one morning. The bird life is rich and plentiful, yet we live only four minutes from The Pines Shopping Centre!

We have worked hard and with the help of our feathered girls, our three compost bins and a worm farm, we now have vastly improved soil. We bought a mulching machine to cope with the continual dropping of trees and branches on the property. The mulch is spread around the garden and orchard, enriching the soil and improving productivity. When restrictions allow us to mingle more, you are most welcome to come and visit us in our little paradise.



## Thwarted by wildlife.....

- by Fiona Lynch

Next month we move to WA and yes I know that I shouldn't have planted a veggie garden, but I did a practice run of vertical veggies, as we will only have a small courtyard garden. With the wonderful rain, we received, everything took off brilliantly, climbed up my fences and started fruiting prolifically.....until.



1



2



3



4



5

The beans in Pic. 1 were producing up to 250 gms of beans a day. Then one morning I went out to collect them and discovered the scene in Pic. 2. There was literally nothing left on the fence. It's a wonder you didn't hear my yell of woe on the other side of Boroondara!! Rats or possums - I don't know??

The next day after decimating the beans they attacked the tomato plants, eating off all the fruit and even munching down on the stalks as shown in Pic. 3. Definite "Not happy Jan!" situation.

So I googled a solution, which was dog hair in mesh bags tied to the vegetable plants. I knew there had to be a use for the bucket of hair we had just taken off our old keplie Diesel, so I got busy and made bags as shown in Pic. 4. and tied them amongst my tomato plants up the fence.

**Did it work?** Yes and No. Where bags were tied the tomatoes we left, but all the others were munched.

## Gardening jobs for February/March

by Roseanne Loh

1. Do some light soil improvement by top dressing garden beds with compost before the cooler weather arrives.
2. Clean up remains of summer veggies. Tomato plants can be pulled out by roots and hung upside down in a sheltered spot. Tomatoes will slowly ripen and not be wasted.
3. Winter veggie seeds such as spinach, broccoli, snow peas, cabbages and broad beans can be planted now. Watch out for slugs and snails as plants start to sprout.
4. Winter flowering plants ie pansies, alyssum, polyanthus, cinerarias and Icelandic poppies. Sweet pea seeds traditionally go in on St Patrick's Day - 17 March.
5. Bulbs: Separate and replant if necessary. Plant jonquils, daffodils, iris, etc.
6. Roses: Dead head flowers and prune back bushes. Feed them now for an Autumn flush of flowers.
7. Citrus: Shape, prune and fertilise citrus trees. Remove any gall wasp growth.
8. Evergreen perennials such as garlic chives, thymes, rosemary, can be divided. Water in with a seaweed extract to reduce transplant shock.
9. Cut back summer flowering plants and compost them. Avoid putting any diseased plants into your compost.
10. Enjoy the cooler gardening weather that autumn brings and the second flush of roses.

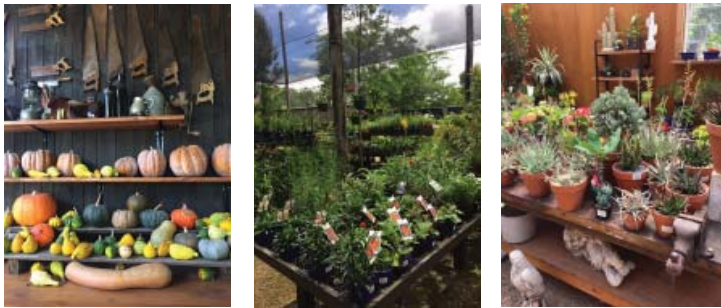
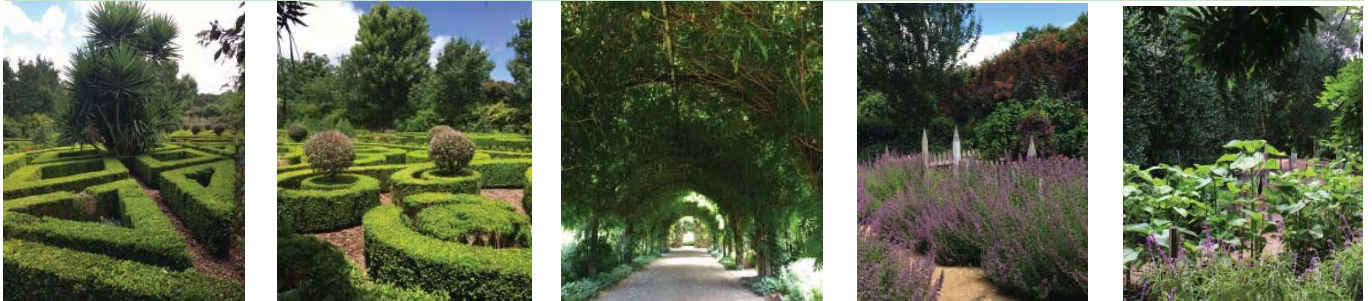


## Plan a mini-trip with some garden club friends.

I know! We are in lockdown yet again and can't go anywhere, but as all we know, things can change. The large bus trips we all enjoyed to amazing gardens and venues may be a thing of the past for the foreseeable future, but small car trips may well be possible again soon. With the Jaguar Car Club, I have had the pleasure of visiting the first two suggestions below and hope to go to Eynesbury on Sunday, but am not holding out hope. Alowyn and Heronswood are stunning. Enjoy!

**Alowyn Gardens** - 1210 Melba Hwy Yarra Glen

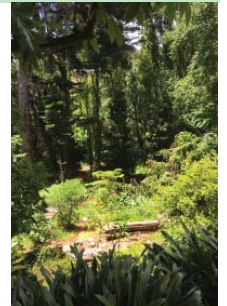
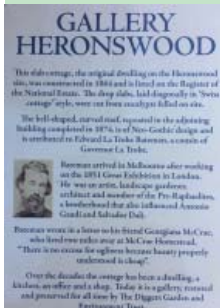
[www.alow yngardens.com.au](http://www.alow yngardens.com.au)



Not only does Alowyn have all these stunning gardens and vistas to walk through but it also has a museum and a very comprehensive nursery with all sorts of plants and fruit trees. Features include a perennial border, edible garden, French provincial garden, nature garden, Parterre garden. But the best feature is the wisteria arbour in bloom in October. (Top middle pic.)

Photos by Fiona Lynch

## Heronswood 105 Latrobe Pde Dromana - Home of the Diggers Club



**Eynesbury Homestead** found in Wyndham/Melton - only 40 minutes from the CBD. The Eynesbury Station complex has 60 buildings and structures dating from 1870 to the 1940s including a shearing complex and manager's quarters. There are cafes and a golf course on the estate.



## Melbourne International Flower and Garden Show 2021 will NOT go ahead in March.

After carefully considering the interests of all our partners and visitors, we cannot proceed with any confidence to stage the event you all know and expect in March 2021. With so much planning and effort required to bring the Melbourne International Flower & Garden Show to life, we have an obligation to make the decision not to go ahead, sooner rather than later. The recent Covid cluster and lockdown has confirmed this decision.

It cannot be under-estimated how important the Melbourne International Flower and Garden Show is to the horticultural industry – it is a platform for an entire industry and for the public to learn, be entertained and inspired. With that in mind, we are exploring alternative options and dates for a show in **October 2021**.